

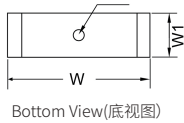
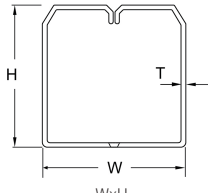
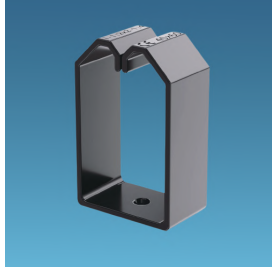
EASCO® LS Type Retainer (LS型线槽专用夹线套)

Materials:ABS.

Feature:

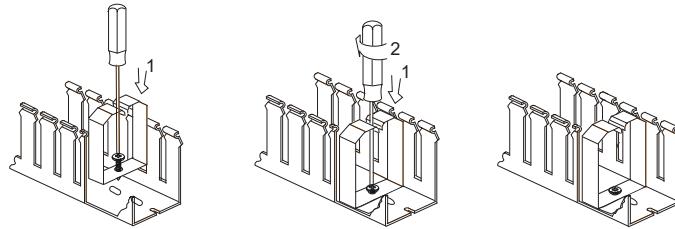
- Wire Retainers For holding wires during wiring operations, these retainers are essential.
- They allow easy access to the interior of the wire duct during maintenance or alterations.
- While assuring that wiring bundles will not fall out when the duct cover is removed.

Color: Black.



Bottom View(底视图)

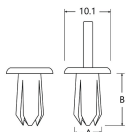
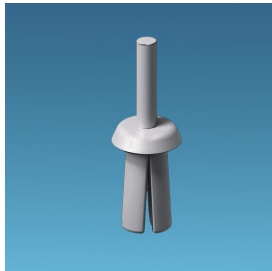
| Article No. | Part No. | Suitable Wire duct Size WxH | W | H | T | W1 | Color |
|----------------|----------|-----------------------------|-----|----|-----|----|-----------|
| 货号 | 型号 | 对应线槽规格 WxH | | | | | 颜色 |
| A0101.032.0001 | LS4040 | 40x40 | 35 | 36 | 2.0 | 20 | Black(黑色) |
| A0101.032.0002 | LS6040 | 60x40 | 55 | 35 | 2.0 | 20 | Black(黑色) |
| A0101.032.0003 | LS4060 | 40x60 | 35 | 56 | 2.0 | 20 | Black(黑色) |
| A0101.032.0004 | LS6060 | 60x60 | 54 | 55 | 2.0 | 20 | Black(黑色) |
| A0101.032.0005 | LS8060 | 80x60 | 74 | 55 | 2.0 | 20 | Black(黑色) |
| A0101.032.0006 | LS10060 | 100x60 | 94 | 55 | 2.0 | 20 | Black(黑色) |
| A0101.032.0007 | LS12060 | 120x60 | 114 | 54 | 2.0 | 20 | Black(黑色) |
| A0101.032.0008 | LS4080 | 40x80 | 34 | 75 | 2.0 | 20 | Black(黑色) |
| A0101.032.0009 | LS6080 | 60x80 | 54 | 75 | 2.0 | 20 | Black(黑色) |
| A0101.032.0010 | LS8080 | 80x80 | 74 | 74 | 2.0 | 20 | Black(黑色) |
| A0101.032.0011 | LS10080 | 100x80 | 94 | 75 | 2.0 | 20 | Black(黑色) |
| A0101.032.0012 | LS12080 | 120x80 | 113 | 74 | 2.0 | 20 | Black(黑色) |
| A0101.032.0013 | LS60100 | 60x100 | 54 | 95 | 2.0 | 20 | Black(黑色) |
| A0101.032.0014 | LS80100 | 80x100 | 74 | 94 | 2.0 | 20 | Black(黑色) |
| A0101.032.0015 | LS100100 | 100x100 | 93 | 94 | 2.0 | 20 | Black(黑色) |
| A0101.032.0016 | LS150100 | 150x100 | 143 | 94 | 2.0 | 20 | Black(黑色) |



EASCO® R Type Rivet (Use With Wiring Duct) (R型配线槽专用尼龙铆钉)

Materials:Nylon.

Structure: secure the wiring duct with the nylon rivet through the mounting holes on duct base.



Rivet(铆钉示意图)

| Article No. | Part No. | Rivet Hole (A) | Rivet Length (B) | Base Thickness (T) | Color | Pkg Qty (pcs) |
|----------------|----------|----------------|------------------|--------------------|-----------|---------------|
| 货号 | 型号 | 铆钉孔径 (A) | 铆钉长度 (B) | 基板厚度范围 | 颜色 | 包装数 (个) |
| A0101.024.0001 | R5 | 5 | 10 | 7.0~10.0 | Black(黑色) | 500 |
| A0101.024.0002 | R6 | 6.2 | 11 | 7.0~12.0 | Black(黑色) | 500 |

